

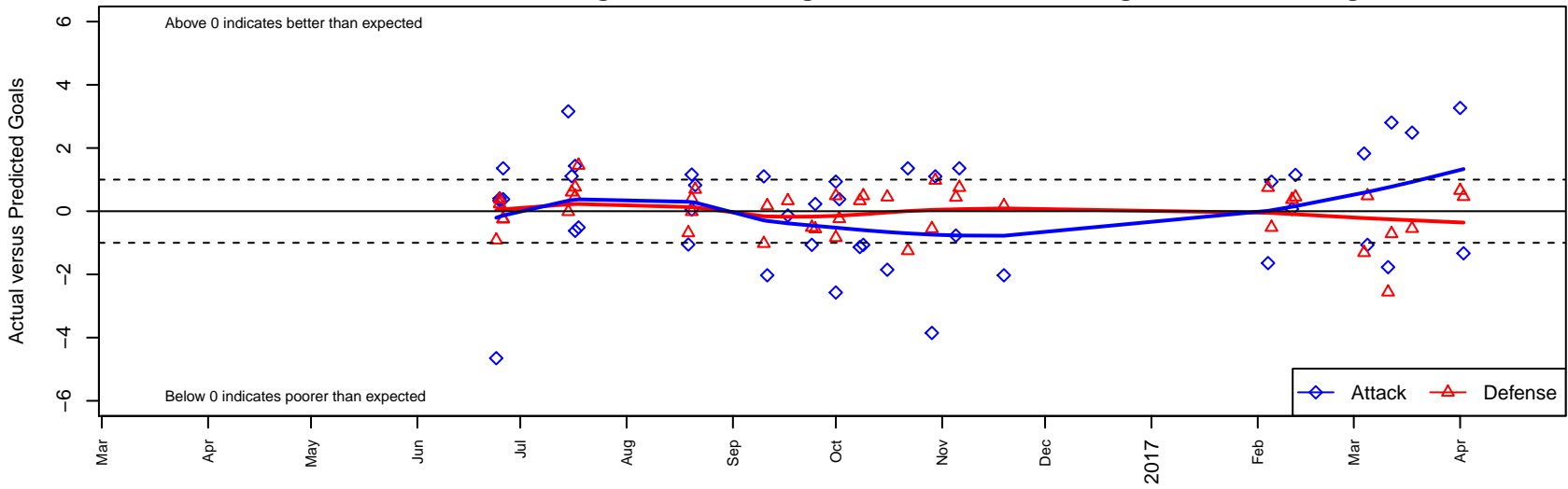
# Washington Timbers Red 1 G05

Washington Timbers  
 Vancouver, WA  
 G05 total strength=1288  
 attack=6.51 defense=4.51  
 fall league = PTT G05 Premier Red  
 spr league = Spr OYS G05 Premier Red

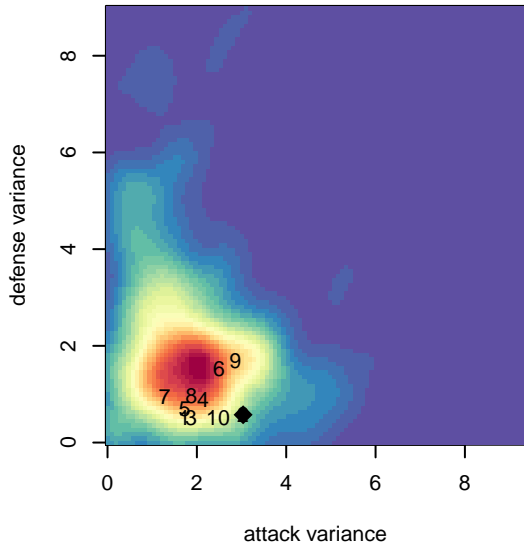
alt names used:  
 WA Timbers 05G Red 1  
 WA Timbers FC 05G Red 1  
 WASHINGTON TIMBERS G05 RED 1 (WA)  
 WASHINGTON TIMBERSG05 RED  
 WA Timbers 05G Red 1  
 WA Timbers 05G Red 1

Venues played:  
 2016 Clash At the Border Div 1 Gold/Silver U12  
 2016 Nike Crossfire Challenge Super 9v9 U12  
 2016 NWCL 05  
 2016 PTT G05 Premier Red  
 2016 Spr OYS G05 Premier Red  
 2016 WYS Championship G05

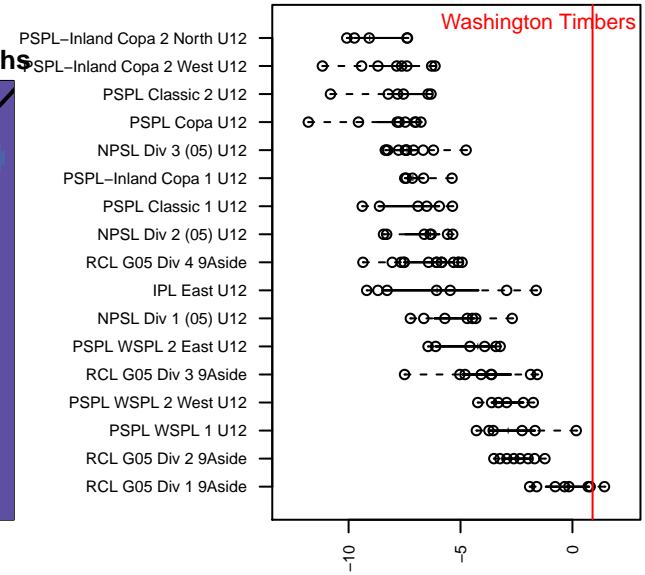
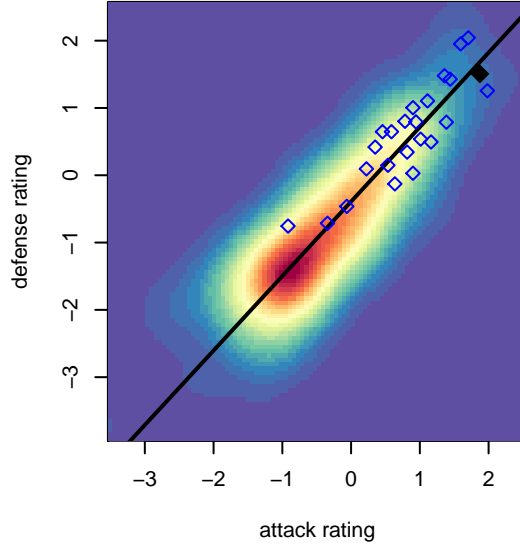
**Washington Timbers Red 1 G05**  
 Dots are actual minus expected GF (blue circles) and GA (red triangles).  
 Blue line is smoothed change in attack strength. Red is smoothed change in defense strength.



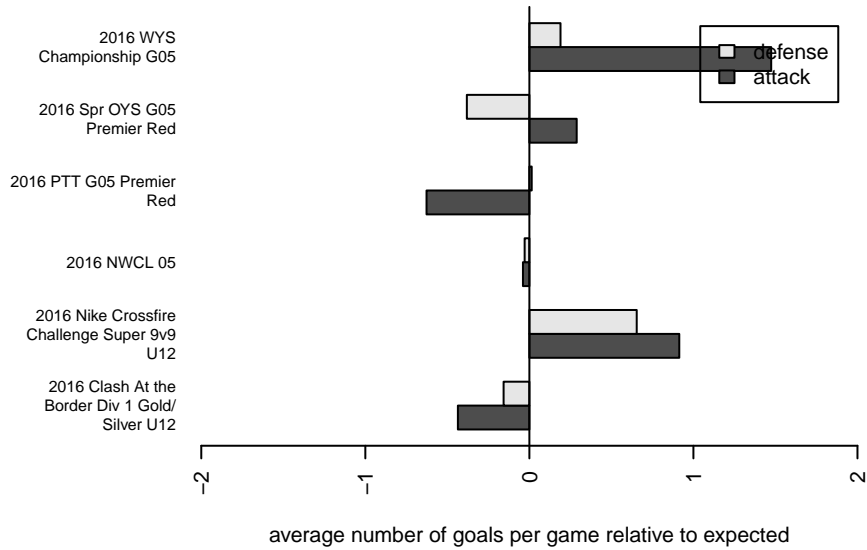
**attack and defense variance (black dot)  
relative to other teams  
and top 10 in region**



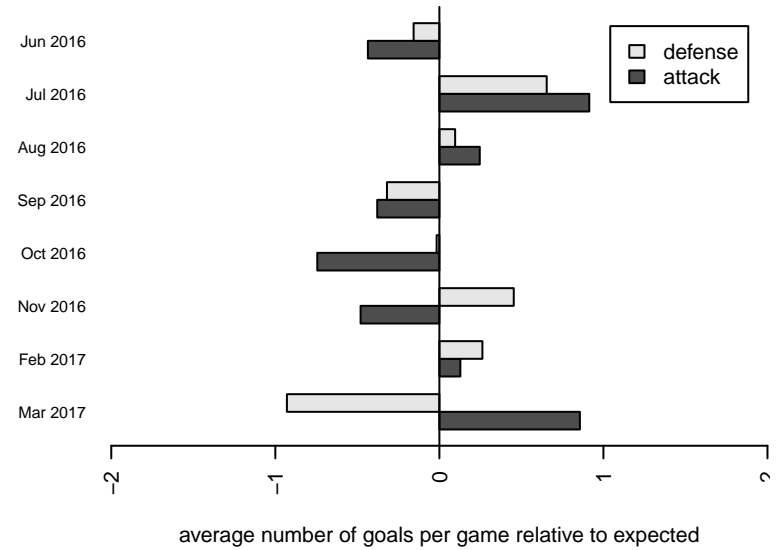
**attack and defense rating  
relative to others at age  
and all opponents in last 13 months**



**Performance relative to 13 month average**



**Performance relative to 13 month average**



date	home		away		venue	pred.home	pred.away
2017-04-02	RV Slammers Orange G05	0	Washington Timbers Red 1 G05	1	2016 WYS Championship G05	0.46	2.33
2017-04-01	Eastside FC Red G05	0	Washington Timbers Red 1 G05	5	2016 WYS Championship G05	0.66	1.73
2017-03-18	Washington Timbers Red 1 G05	4	Crossfire Premier A G05	2	2016 WYS Championship G05	1.51	1.45
2017-03-12	Washington Timbers Red 1 G05	7	Crossfire OR SSC Blue I G05	1	2016 Spr OYS G05 Premier Red	4.19	0.29
2017-03-11	PCU Red 1 G05	3	Washington Timbers Red 1 G05	3	2016 Spr OYS G05 Premier Red	0.44	4.77
2017-03-05	THUSC Neon Black G05	0	Washington Timbers Red 1 G05	2	2016 Spr OYS G05 Premier Red	0.49	3.06
2017-03-04	NEU White G05	2	Washington Timbers Red 1 G05	5	2016 Spr OYS G05 Premier Red	0.69	3.17
2017-02-12	Washington Timbers Red 1 G05	7	Pacific FC Fire G05	0	2016 Spr OYS G05 Premier Red	5.85	0.45
2017-02-11	Washington Timbers Red 1 G05	3	WAFC Lightning G05	0	2016 Spr OYS G05 Premier Red	2.93	0.37
2017-02-05	Washington Timbers Red 1 G05	4	THUSC Neon Black G05	1	2016 Spr OYS G05 Premier Red	3.06	0.49
2017-02-04	FC Portland Navy G05	0	Washington Timbers Red 1 G05	0	2016 Spr OYS G05 Premier Red	0.75	1.64
2016-11-19	Bend FC Timbers Red G05	0	Washington Timbers Red 1 G05	9	2016 PTT G05 Premier Red	0.17	11.03
2016-11-06	Washington Timbers Red 1 G05	3	FC Portland Navy G05	0	2016 PTT G05 Premier Red	1.64	0.75
2016-11-05	Washington Timbers Red 1 G05	4	PCU Red 1 G05	0	2016 PTT G05 Premier Red	4.77	0.44
2016-10-30	Washington Timbers Red 1 G05	2	Crossfire OR Blue I G05	0	2016 PTT G05 Premier Red	0.90	0.98
2016-10-29	Washington Timbers Red 1 G05	2	Pacific FC Fire G05	1	2016 PTT G05 Premier Red	5.85	0.45
2016-10-22	FC Portland Navy G05	2	Washington Timbers Red 1 G05	3	2016 PTT G05 Premier Red	0.75	1.64
2016-10-16	Pacific FC Fire G05	0	Washington Timbers Red 1 G05	4	2016 PTT G05 Premier Red	0.45	5.85
2016-10-09	Washington Timbers Red 1 G05	2	THUSC Neon Black G05	0	2016 PTT G05 Premier Red	3.06	0.49
2016-10-08	ETFC Chelsea Black G05	0	Washington Timbers Red 1 G05	4	2016 PTT G05 Premier Red	0.33	5.13
2016-10-02	ISC Gunners A G05	1	Washington Timbers Red 1 G05	2	2016 NWCL 05	0.76	1.62
2016-10-01	THUSC Neon Black G05	0	Washington Timbers Red 1 G05	4	2016 NWCL 05	0.49	3.06
2016-10-01	Indie Chicas Lime G05	1	Washington Timbers Red 1 G05	7	2016 NWCL 05	0.17	9.57
2016-09-25	PCU Red 1 G05	1	Washington Timbers Red 1 G05	5	2016 PTT G05 Premier Red	0.44	4.77
2016-09-24	THUSC Neon Black G05	1	Washington Timbers Red 1 G05	2	2016 PTT G05 Premier Red	0.49	3.06
2016-09-17	Washington Timbers Red 1 G05	5	ETFC Chelsea Black G05	0	2016 PTT G05 Premier Red	5.13	0.33
2016-09-11	Washington Timbers Red 1 G05	9	Bend FC Timbers Red G05	0	2016 PTT G05 Premier Red	11.03	0.17
2016-09-10	Crossfire OR Blue I G05	2	Washington Timbers Red 1 G05	2	2016 PTT G05 Premier Red	0.98	0.90

<b>date</b>	<b>home</b>		<b>away</b>		<b>venue</b>	<b>pred.home</b>	<b>pred.away</b>
2016-08-21	Washington Timbers Red 1 G05	4	NEU White G05	0	2016 NWCL 05	3.17	0.69
2016-08-20	Washington Timbers Red 1 G05	3	Spokane Sounders A G05	0	2016 NWCL 05	2.95	0.39
2016-08-20	Washington Timbers Red 1 G05	2	WPFC Black G05	1	2016 NWCL 05	0.84	0.99
2016-08-19	Washington Timbers Red 1 G05	2	FC Nova Gold BS G05	1	2016 NWCL 05	3.05	0.31
2016-07-18	Washington Timbers Red 1 G05	1	Crossfire Premier A G05	0	2016 Nike Crossfire Challenge Super 9v9	1.51	1.45
2016-07-17	Washington Timbers Red 1 G05	5	Whitecaps FC Prospects G05	0	2016 Nike Crossfire Challenge Super 9v9	3.57	0.47
2016-07-17	ISC Gunners A G05	0	Washington Timbers Red 1 G05	1	2016 Nike Crossfire Challenge Super 9v9	0.76	1.62
2016-07-16	Utah Avalanche Black G05	0	Washington Timbers Red 1 G05	5	2016 Nike Crossfire Challenge Super 9v9	0.60	3.89
2016-07-15	WPFC Black G05	1	Washington Timbers Red 1 G05	4	2016 Nike Crossfire Challenge Super 9v9	0.99	0.84
2016-06-26	Washington Timbers Red 1 G05	3	FC Portland Navy G05	1	2016 Clash At the Border Div 1 Gold/Silv	1.64	0.75
2016-06-26	Washington Timbers Red 1 G05	2	ISC Gunners A G05	1	2016 Clash At the Border Div 1 Gold/Silv	1.62	0.76
2016-06-25	Crossfire OR SSC -Unk G05	0	Washington Timbers Red 1 G05	6	2016 Clash At the Border Div 1 Gold/Silv	0.23	5.60
2016-06-25	Three Rivers SC Black G05	0	Washington Timbers Red 1 G05	7	2016 Clash At the Border Div 1 Gold/Silv	0.38	6.67
2016-06-24	Washington Timbers Red 1 G05	8	FC Salmon Creek Nemesis White G05	1	2016 Clash At the Border Div 1 Gold/Silv	12.65	0.09